

- Not-pluggable relay
- Protection against short circuit, overload, overtemperature
- Suitable for DC loads
- Compact dimension



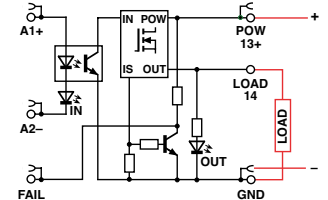
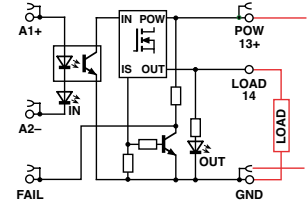
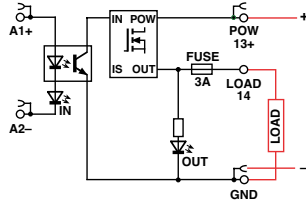
NOTE

Manufacturer and model of the components is not binding, technical data are to be considered typical

(1) The maximum current depend on the number of actived output and the ambient temperature

(2) Protection switch off the output current and yellow LED. The output restart automatically when the overload is removed. The current limiting depending also by operating temperature, for more accuracy or to protect cables with a lower rated current, an external fuse must be provided.

(3) with the CK/PT end plate on the final module



CODE	XCKS024DC024DC03	XCKS024DC024DC05	XCKS024DC024DC10
TYPE	CKS-024DC/024DC/03	CKS-024DC/024DC/05	CKS-024DC/024DC/10
INPUT TECHNICAL DATA			
Input rated voltage	5-12-24 Vdc (range 4.7...32 Vdc)	5-12-24 Vdc (range 4.7...32 Vdc)	5-12-24 Vdc (range 4.7...32 Vdc)
Pull in drop out voltage type	4.5 V / 4.2 V	4.5 V / 4.2 V	4.5 V / 4.2 V
Current consumption	10 mA ±10% at 24 Vdc	10 mA ±10% at 24 Vdc	10 mA ±10% at 24 Vdc
Turn ON OFF time	—	—	—
Frequency	200 Hz max.	200 Hz max.	200 Hz max.
Protection circuit	Free-wheel diode, Reverse polarity	Free-wheel diode, Reverse polarity	Free-wheel diode, Reverse polarity
Connection type	2.5 mm ² spring type	2.5 mm ² spring type	2.5 mm ² spring type
Input channels	1 not pluggable	1 not pluggable	1 not pluggable
OUTPUT TECHNICAL DATA			
Contact type	mosfet	mosfet	mosfet
Output voltage	5...32 Vdc	5...32 Vdc	5...32 Vdc
Nominal current	3 A (24 Vdc) at 45°C / 5 A (24 Vdc) at 20°C	8 A (24 Vdc) at 45°C / 5 A (24 Vdc) at 55°C	10 A (24 Vdc) at 45°C / 15 A (24 Vdc) at 20°C
Max current	5 A for 2 s ±10% at 25°C (1)	21 A for 100 ms at 25°C (1)	21 A for 100 ms at 25°C (1)
Leakage current with signal 0	< 25 µA at 24 Vdc	< 25 µA at 24 Vdc	< 25 µA at 24 Vdc
Min applicable load	10 mA / 5 V	10 mA / 5 V	10 mA / 5 V
Max fuse current	—	—	—
Connection type	2.5 mm ² (AWG26-14), spring type	2.5 mm ² (AWG26-14), spring type	2.5 mm ² (AWG26-14), spring type
Protection circuit device	suppressor diode / resettable fuse (2)	suppressor diode / short circuit, overload, overtemperature (2)	suppressor diode / short circuit, overload, overtemperature (2)
GENERAL TECHNICAL DATA			
Operating temperature range	-20...+60°C	-20...+60°C	-20...+60°C
Input output isolation	2.5 kVac / 60 s	2.5 kVac / 60 s	2.5 kVac / 60 s
Protection degree	IP 00 / IP20 (3)	IP 00 / IP20 (3)	IP 00 / IP20 (3)
Reference Standards	—	—	—
Overvoltage category pollution degree	II / 2	II / 2	II / 2
Status indication	LED "Input" / LED "Output-Fail"	LED "Input" / LED "Output-Fail"	LED "Input" / LED "Output-Fail"
Housing material	UL94V-0 plastic material	UL94V-0 plastic material	UL94V-0 plastic material
Dimensions	6x91x100 mm	6x91x100 mm	6x91x100 mm
Approximate weight	30 g	30 g	30 g
Mounting information	on a rail, side by side	on a rail, side by side	on a rail, side by side
APPROVALS	CE	CE	CE
ACCESSORIES			
Mounting rail IEC60715 TH35 75	PR/3/AC, PR/3/AC/ZB, PR/3/AS, PR/3/AS/ZB	PR/3/AC, PR/3/AC/ZB, PR/3/AS, PR/3/AS/ZB	PR/3/AC, PR/3/AC/ZB, PR/3/AS, PR/3/AS/ZB
Mounting rail IEC60715 TH35 15	—	—	—
Marking tag	NU0851	NU0851	NU0851
Spare part relay	—	—	—
End section	XCKPT	XCKPT	XCKPT
Plugin jumper	PTC/4/02 (2 poles) PTC/4/03 (3 poles) PTC/4/04 (4 poles) PTC/4/05 (5 poles) PTC/4/10 (10 poles) PTC/4/00 (42 poles)	PTC/4/02 (2 poles) PTC/4/03 (3 poles) PTC/4/04 (4 poles) PTC/4/05 (5 poles) PTC/4/10 (10 poles) PTC/4/00 (42 poles)	PTC/4/02 (2 poles) PTC/4/03 (3 poles) PTC/4/04 (4 poles) PTC/4/05 (5 poles) PTC/4/10 (10 poles) PTC/4/00 (42 poles)