

Part Number: ERV-GS 125x150.16



Note: Components not true to scale. Picture may differ from original product.

© ELAFLEX HIBY, Hamburg / Germany

<https://ervconfigurator.elaflex.de/ERV-GS/125MM/L150MM/.16/STANDARD/.16/STANDARD/STANDARD/STANDARD/STANDARD/Product11.html>

**Bellows**

**ERV-GS 'Yellowsteel'**

YELLOW STEEL expansion joints for petroleum based products, DIN EN fuels up to 50% aromatic content, cooling water with oily anticorrosion additives, lubrication and hydraulic oil, seawater.

Temperature range (depending on medium) -20° C up to +90° C, temporarily up to +100° C. Fire resistant (to ISO 15540) up to 30 min. and +800° C. Electrically dissipative.

Cover: Chloroprene CR

Liner: NBR (nitrile), seamless, abrasion resistant

Marking: 2 yellow bands, ERV DN .., PN .., production date

**Size DN**

**DN 125 mm / 5"**

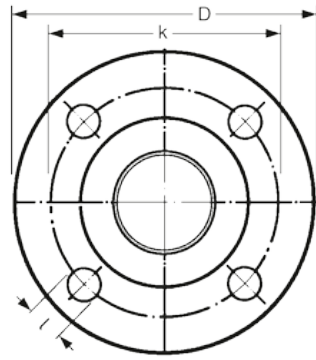
**Length**

**BL 150 mm**

**Flange 1**

**DIN PN 16**

Dimension: D: 250 mm, k: 210 mm, 8 holes, l: 18 mm



- Material 1**                    **Zinc Plated Steel**
- Flange 2**                    **Same as first flange**
- Material 2**                   **Same as first material**
- Limiters**                    **Without limiter**  
Without limiter (Standard)
- Accessories**                **No further accessories**  
Without accessories (Standard)
- Flame Protection**         **Without flame protection**  
ERV-GS is fire resistant to ISO 15540 up to 30 min. at +800° C. Therefore, usually no additional flame protection is necessary.

Permissible Vacuum [mbar] for Type ERV-GS

DN	25	32	40	50	65	80	100	125	150	200	250	300	350	400	450	500	600
no VSD / VSR	max.	max.	max.	max.	max.	max.	-800	-700	-700	-700	-700	-600	-400	-400		-300	-200
with VSD				max.	max.	max.	max.	max.	max.	-600	-400	-200					
with VSR								max.	max.	max.	max.	max.	max.	max.		-800	-700
with VSRV								max.	max.	max.	max.	max.	max.	max.		max.	max.
with TAS				max.	max.	max.	max.	max.	max.	-600	-400	-200					
with TA									Nicht geeignet für Vakuum.								

Data measured at room temperature with new expansion joints in standard length and non swelling media. For swelling media use a safety factor.  
 A compressed installation improves the in the table listed vacuum resistance. The maximum permissible elongation (L max.) reduces the vacuum resistance by 50%.  
 For this case we recommend to use vacuum support spirals or vacuum support rings (see catalogue page 468).  
 Dependencies of overpressure, range of movement and temperature please see table on catalogue page 404.

**Contact:**

ELAFLEX HIBY GmbH & Co. KG  
 Schnackenburgallee 121  
 22525 Hamburg (Germany)  
 Tel.: +49 40 540 005 0  
 Fax: +49 40 540 005 67  
 E-Mail: [info@elaflex.de](mailto:info@elaflex.de)  
 Internet: [www.elaflex.com](http://www.elaflex.com)