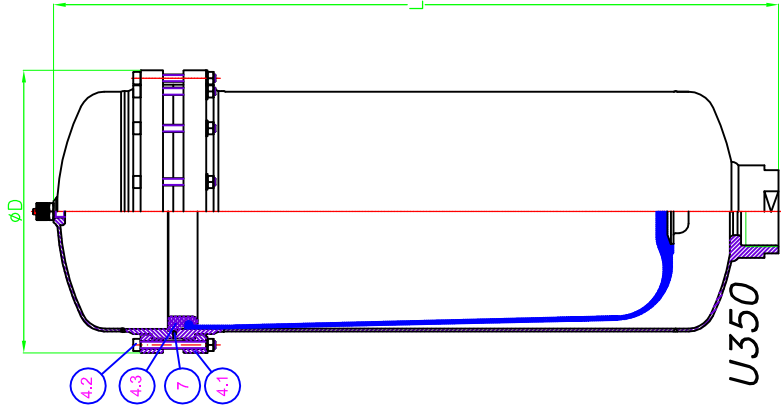


FOR HIGHER PRESSURES, SIZES, MATERIALS AND THREAD CONNECTIONS, PLEASE CONSULT

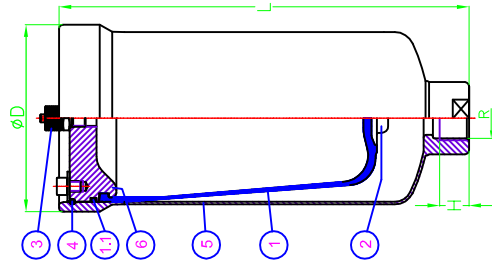
ORDER EXAMPLE: U015 A04 B 1 A1
 Capacity: 1.5 litres
 A04≡40bar
 B= BUTYL Rubber Bladder
 3/4" Standard Connection
 Body & insert material: AISI 316L

- A02≡20bar
- A03≡30bar
- A04≡40bar
- A05≡50bar
- A18≡180bar
- A26≡260bar

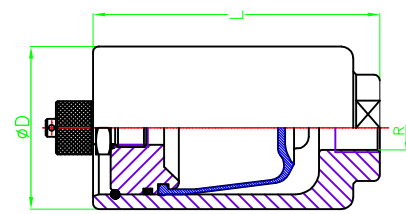
Value of "K": $\text{Maxi. Pressure} \leq K \text{ (@Constant Temp.)}$
 Filling gas Pressure



U350



U007 to U250



U000 to U003

Wall thickness acc. to AD-2000 code

H = MAXI. LENGTH OF THREAD CONNECTION

Standard Bladder Rubbers: N=NBR, B=BUTYL, E=EPDM, V=FKM (EPDM not available for U000)

(Other Rubbers: Neoprene, Hypalon, HNBR, etc.)	N	B	E	V
Rubbers Max. Working Temperatures (°C)	+80	+100	+130	+200
	-15	-30	-30	-20

Working Temperature versus Working Pressures **

For a temperature of	80°C	correspond design pressure x	0.87
" "	100°C	"	x 0.82
" "	130°C	"	x 0.78
" "	200°C	"	x 0.68

THE MAX. WORKING TEMPERATURE CAN BE REDUCED DEPENDING ON THE LIQUID IN CONTACT

Those Pulsation Dampeners ought to be filled with gas at 80% of the working pressure. It shall be done at the working temperature.

HIDRACAR SA
 08243 MANRESA (BARCELONA) SPAIN
 Phone: 34.93.8330252
 E-mail: hidracar@hidracar.com

Customer

Title S.S.MEDIUM & LOW PRESSURE
 BLADDER PULSATION DAMPERS (standard units)

Customer Ref.

Replaced Drg.N°
 AV.AI.MP-BP.IN.DOC (Rev.22)

Drg.No
 AV.AI.MP-BP.IN.DOC

Drawn
 E.Ponsa

Rev.
 23
 Date
 Feb-19
 Scale
 none

PULSATION DAMPER Reference	VOLUME (litres)	DESIGN PRESSURE (bar-g @50°C)	D (mm)	L (mm)	R (BSP)	H (mm)	WEIGHT (Kg)	K VALUE
U000	0.04	260	55	70	3/8"	14	0.8	
U001	0.09			97			1.0	2.5
U002	0.18	180	70	122	1/2"	16	1.8	
U003	0.36		85	168			3.6	3.0
U007	0.65	50	88	208	3/4"	20	2.5	3.5
U010	0.95	40	113	211		25	4.3	3.0
U015	1.50			256			4.6	3.5
U030	2.60	30	140	305	1"	27	5.3	
U040	3.80			405			5.7	5.0
U060	5.60	40	167	420	1-1/2"		10.0	
U100	10.40	30	217	432	2"	30	15.0	4.0
U150	15.00			645			19.2	5.0
U250	25.00	20	270	677	2-1/2"		26.0	4.0
U350	35.00		302	772			28.5	2.2
7	"O" RING		1					NBR, BUTYL, EPDM & FKM
6	COVER		1					AISI 316L
5	BODY		1					AISI 316L
4.3	RETAINING RING		1					AISI 316L
4.2	BOLTS & NUTS		14					DIN 912 & 934 A4-70
4.1	RETAINING RING		2					AISI 316L
4	RETAINING RING		1					DIN17224 (AISI 316)
3	FILLING N2 VALVE		1					AISI 316L (1/4" BSP)
2	INSERT		1					AISI 316L
1.1	"O" RING		1					NBR, BUTYL, EPDM & FKM
1	BLADDER		1					NBR, BUTYL, EPDM & FKM
No	DENOMINATION		QT.					MATERIALS

ATTENTION! ALWAYS MUST BE MOUNTED VERTICALLY (VALVE 3 ON TOP)

NOTE: The precharge with gas or air must be done slowly and with our charging tool Ref. BVXXA1TM