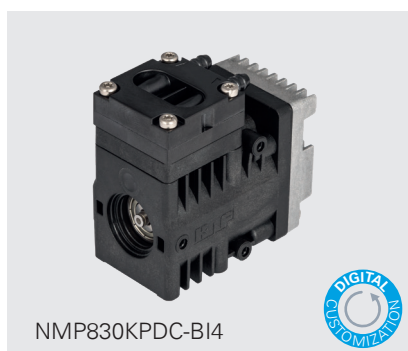


NMP830 SERIES MICRO DIAPHRAGM GAS PUMPS



NMP830KPDC



NMP830KPDC-BI4



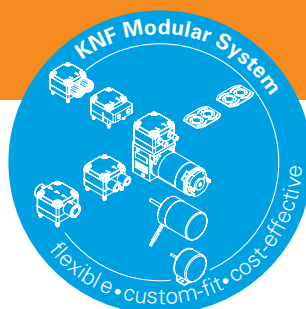
ADVANTAGES

- Customizing available
- Tested to customers specs
- High performance to size, efficiency and weight ratio
- Excellent reliability/durability
- Speed controllable
- Low sound level
- Long service life
- Uncontaminated transfer
- Maintenance-free
- High chemical resistance
- Can be installed in any position
- FDA listed parts available

POSSIBLE AREAS OF USE

- Medical devices
- Analytical equipment
- Emission measurement
- Reprographic
- Degassing
- Safety/Security
- Portable devices

Please visit our website
www.knf.com
to get more information.



PERFORMANCE DATA

Series Model	NMP830											
Material design	KPDC		KVDC		KTDC		KPDC-BI4		KVDC-BI4		KTDC-BI4	
Pump head	PPS											
Diaphragm	EPDM		FKM		PTFE coated		EPDM		FKM		PTFE coated	
Valves/Sealing	EPDM		FKM		FFKM		EPDM		FKM		FFKM	
Flow rate at atm. pressure (l/min)	3	3.1	2.6	2.7	2.5	2.6	2.5	2.5	2.2	2.2	2.1	2.1
Ultimate vacuum (mbar abs.)	250	250	250	250	350	350	250	250	250	250	300	300
Ultimate pressure (bar rel)	1.4	1.4	1.2	1.2	1	1	1.4	1.4	1.4	1.4	1.2	1.2
Permissible media and ambient temperature (° C / ° F)	+5° C to +40° C / 41° F to 104° F (extended temperature on request)											
Weight (g/oz)	175/6.17		175/6.17		175/6.17		161/5.67		161/5.67		161/5.67	

ELECTRICAL DATA

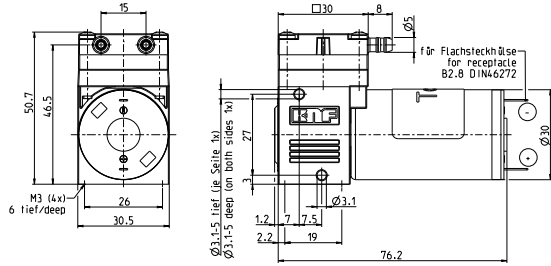
Voltage (V)	12	24	12	24	12	24	12	24	12	24	12	24
Motor	DC						Integrated brushless DC, 4 wire (2 wire on request)					
I _{max} (A)	0.5	0.25	0.5	0.25	0.5	0.25	0.5	0.25	0.6	0.3	0.55	0.3

NMP830KPDC

PERFORMANCE DATA

Series model	Flow rate at atm. pressure (l/min)	Max. operating pressure (bar rel)	Ultimate vacuum (mbar abs.)
NMP830KPDC 12V	3	1.4	250
NMP830KPDC 24V	3.1	1.4	250

NMP830KPDC



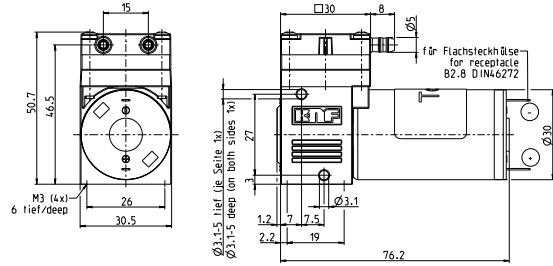
Dimensions in mm

NMP830KVDC

PERFORMANCE DATA

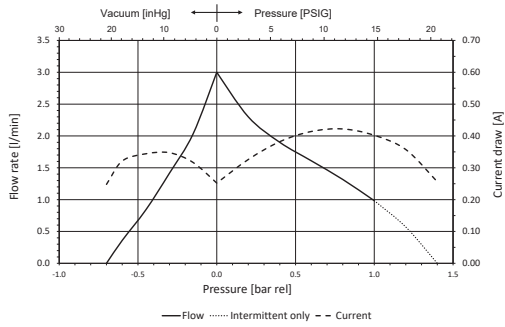
Series model	Flow rate at atm. pressure (l/min)	Max. operating pressure (bar rel)	Ultimate vacuum (mbar abs.)
NMP830KVDC 12V	2.6	1.2	250
NMP830KVDC 24V	2.7	1.2	250

NMP830KVDC

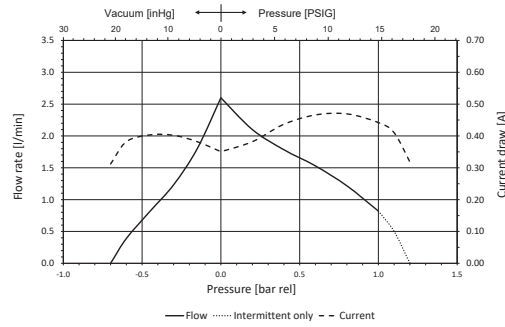


Dimensions in mm

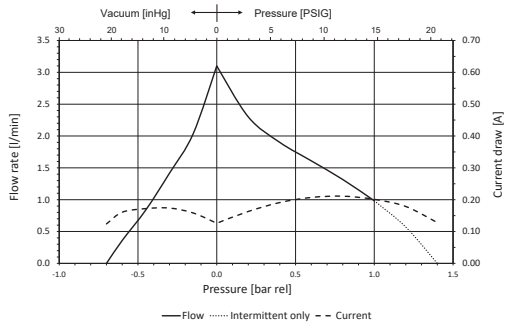
NMP830KPDC 12V FLOW CURVE



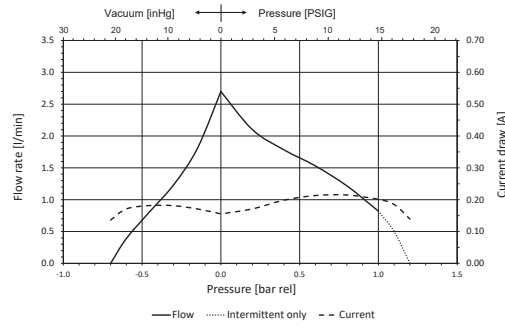
NMP830KVDC 12V FLOW CURVE



NMP830KPDC 24V FLOW CURVE



NMP830KVDC 24V FLOW CURVE

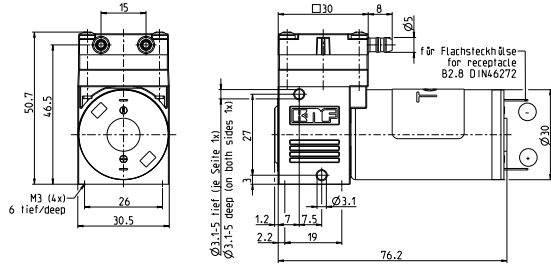


NMP830KTDC

PERFORMANCE DATA

Series model	Flow rate at atm. pressure (l/min)	Max. operating pressure (bar rel)	Ultimate vacuum (mbar abs.)
NMP830KTDC 12V	2.5	1	350
NMP830KTDC 24V	2.6	1	350

NMP830KTDC



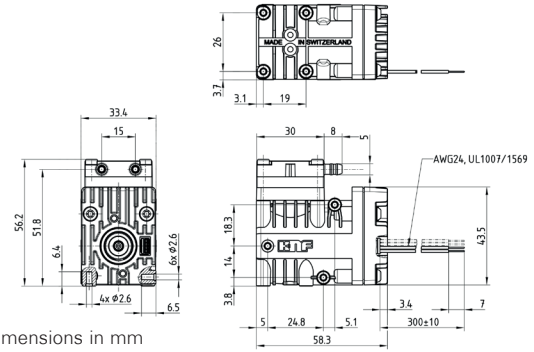
Dimensions in mm

NMP830KPDC-BI4

PERFORMANCE DATA

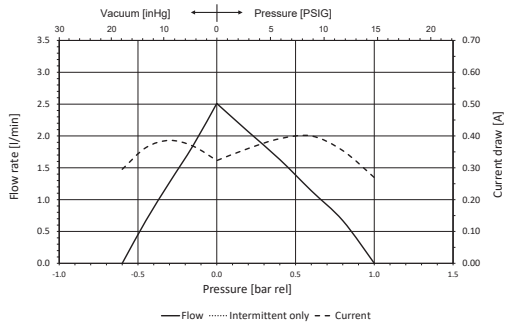
Series model	Flow rate at atm. pressure (l/min)	Max. operating pressure (bar rel)	Ultimate vacuum (mbar abs.)
NMP830KPDC-BI4 12V	2.5	1.4	250
NMP830KPDC-BI4 24V	2.5	1.4	250

NMP830KPDC-BI4

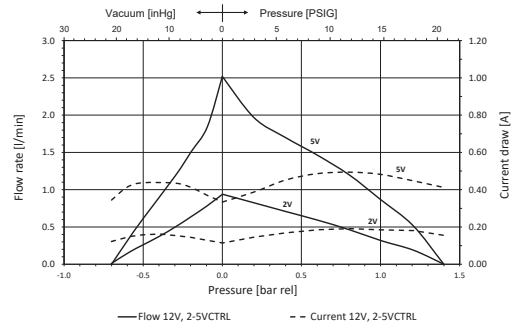


Dimensions in mm

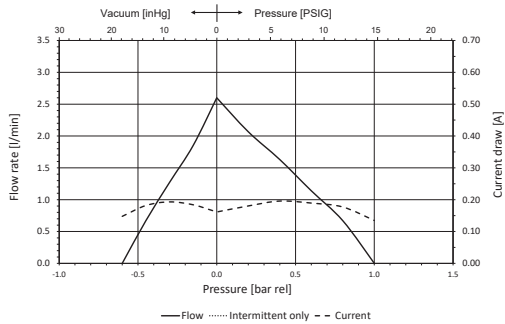
NMP830KTDC 12V FLOW CURVE



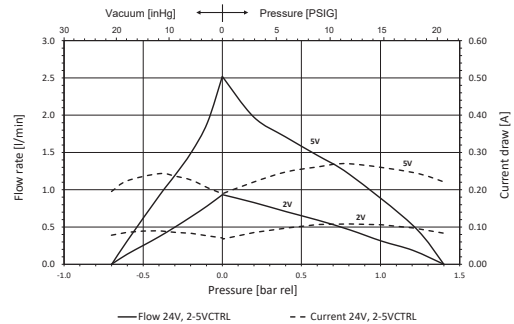
NMP830KPDC-BI4 12V FLOW CURVE



NMP830KTDC 24V FLOW CURVE



NMP830KPDC-BI4 24V FLOW CURVE

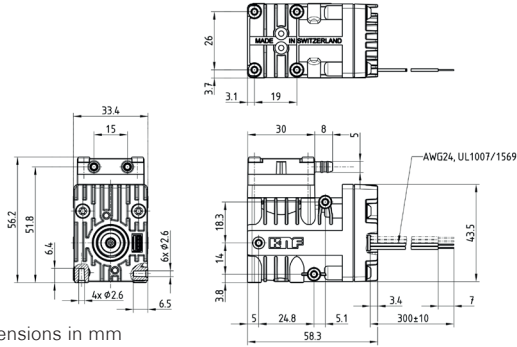


NMP830KVDC-BI4

PERFORMANCE DATA

Series model	Flow rate at atm. pressure (l/min)	Max. operating pressure (bar rel)	Ultimate vacuum (mbar abs.)
NMP830KVDC-BI4 12V	2.2	1.4	250
NMP830KVDC-BI4 24V	2.2	1.4	250

NMP830KVDC-BI4



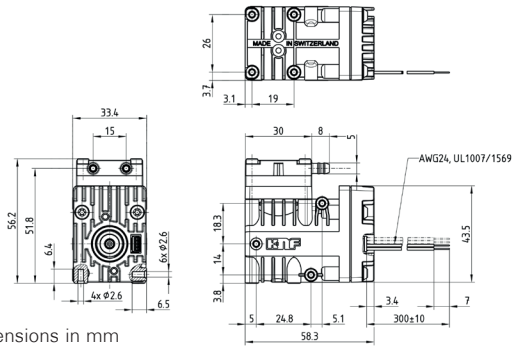
Dimensions in mm

NMP830KTDC-BI4

PERFORMANCE DATA

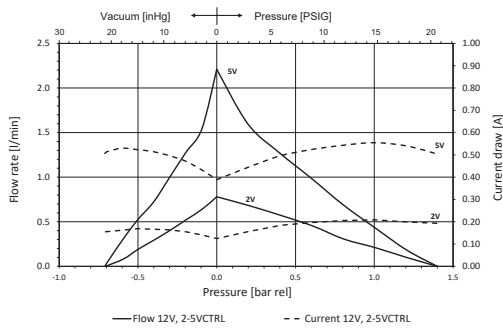
Series model	Flow rate at atm. pressure (l/min)	Max. operating pressure (bar rel)	Ultimate vacuum (mbar abs.)
NMP830KTDC-BI4 12V	2.1	1.2	300
NMP830KTDC-BI4 24V	2.1	1.2	300

NMP830KTDC-BI4

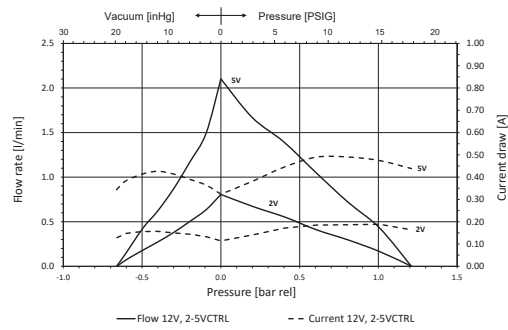


Dimensions in mm

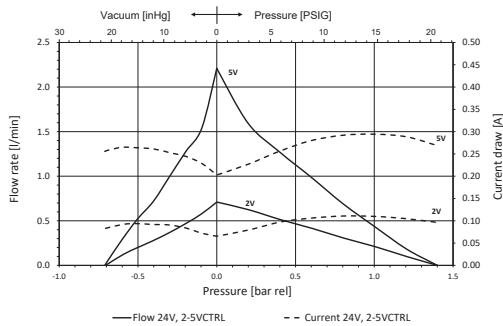
NMP830KVDC-BI4 12V FLOW CURVE



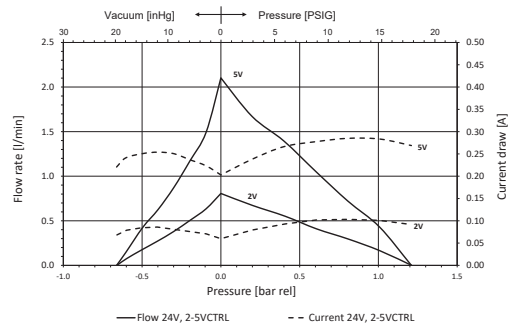
NMP830KTDC-BI4 12V FLOW CURVE







NMP830KVDC-BI4 24V FLOW CURVE



NMP830KTDC-BI4 24V FLOW CURVE



OPTIONS			
Description	Illustration	Part No.	Details
Motors			Other motor options are available. Ask your KNF sales contact to find the best solution for you.
Connecting plate			DN4/6 connecting plate M5 inside thread UNF 1/4".-28 inside thread
Eccentric			Other eccentricities are available to meet your operating point best.

ACCESSORIES			
Description	Illustration	Part No.	Details
Silencer		024805	For hose barbs
Silencer		314005	For DN4/6 connecting plate
Mounting plate		162405	Hole distance 43 x 22 mm. Inner diameter of the sleeve is 3.5 mm, screws are not included.
Rubber-bonded metal		On request	

SPARE PARTS			
Description	Illustration	Part No.	Details
Spare part kit NMP830KP NMP830KV NMP830KT		326908 120805 120806	One kit per head containing valve, O-Ring and Diaphragm. For a double head pump two kits are required.



DIGITAL CUSTOMIZATION

Thanks to digital technology, this pump can be quickly adapted to the customer's system. This is done by parametrizing the firmware of the integrated brushless motor at KNF.

The performance values for the series models shown on this data sheet were determined under test conditions. The actual performance values may differ and depend in particular on the usage conditions and therefore on the specific application, on the parameters of the components involved in the user's system and on any technical modifications carried out which deviate from the standard configuration or the as delivered condition.

If individual designs have been created for specific customers on the basis of series models, other technical performance data may apply. Before operation begins, the relevant operating instructions and/or assembly or installation instructions should be read and the safety information contained in these instructions should be noted. KNF reserves the right to make changes to the product and the associated documentation without prior notice to the customer.



www.knf.com

KNF reserves the right to make technical changes without notice. KNF01/2024. www.knf.com