



Welcome to our online store!

[Log On](#)

[Cart](#)

[Home](#)

[Flexible Drive Couplings](#)

[Pump/Motor Mounts](#)

[Cylinder Rod End Alignment Couplers](#)

[Fluid Power Accessories](#)

[Hydraulic Manifolds & Accessories](#)

[Hydraulic Reservoirs](#)

Search...



Shipping

Please Note: our Shipping Cut-Off time is 2:00 PM Eastern Daylight Savings Time. Orders for in-stock items received before this time will be shipped the same day.

Tax Exempt

If you are ordering products and are TAX EXEMPT, please send a copy of your Certificate of Tax Exemption form to orders@magnaloy.com. Otherwise, you may be charged a sales/use tax on your purchase.

International

Magnaloy no longer accepts online sales transactions outside the United States. Please contact a [US, Canada](#), or our [International Distributor](#) through the Distributors tab on our website.

[Flexible Drive Couplings](#) > [Model 800](#)

M80020816

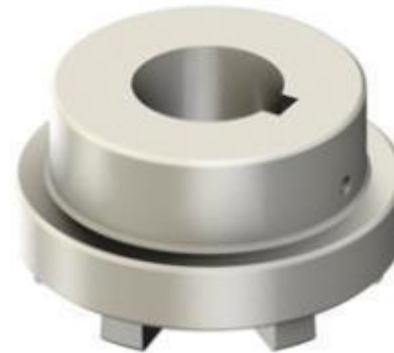
800 HUB 2-1/4" BORE X 1/2" KEYWAY

\$379.00

Quantity:

[Buy Now](#)

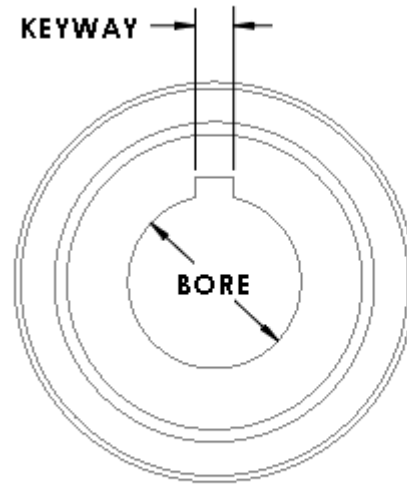
Unit: EACH



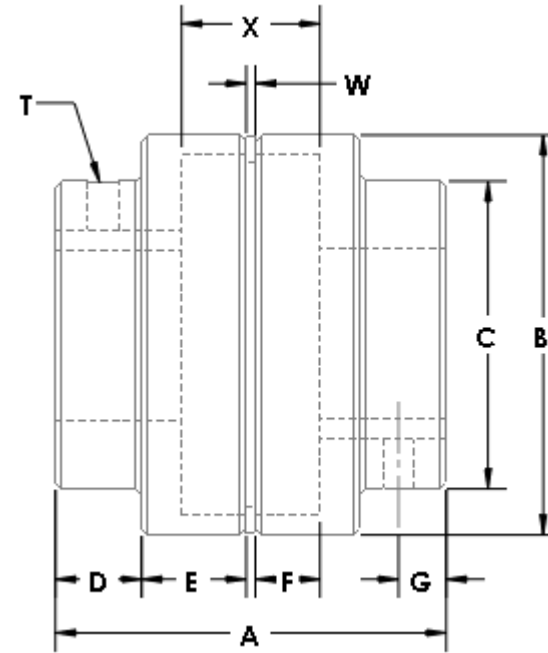
[Details](#)

[Features](#)

| | |
|---|--------|
| A | 7.99 |
| B | 8.600 |
| C | 7.00 |
| D | 2.25 |
| E | 1.62 |
| F | 1.00 |
| G | 1.58 |
| W | 1/16 |
| X | 2.25 |
| T | 1/2-13 |



TOLERANCES: 2 PLACE DECIMAL +/- .01
 3 PLACE DECIMAL +/- .001



[Magnaloy Coupling Company Website](#)

Magnaloy Coupling Company
 A Division of Douville Johnston Corporation
 170 N Industrial Hwy.
 Alpena, MI 49707
 Phone: 989-356-2186
 Fax: 989-354-4190

[Return Policy](#)