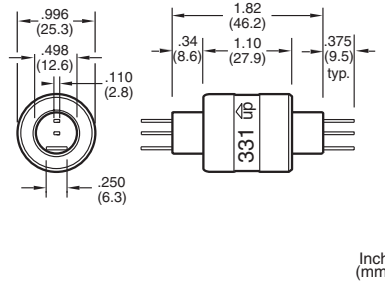


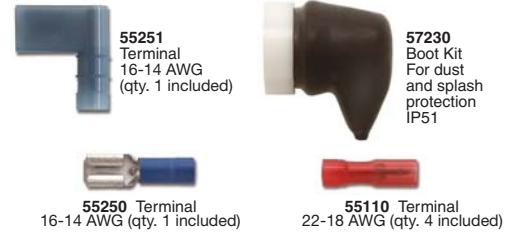
3 Conductors, Combination 4 Amp & 30 Amp

Model 331

MODEL NO.	CONDUCTORS	DESCRIPTION	VOLTAGE AC/DC	AMP RATING AT 240 VAC	MAX FREQ. MHz	CONTACT RESISTANCE	MAX OP. RPM	TEMPERATURE Max. F (C) / Min. F (C)	ROTATION Torque (gm-cm)	CIRCUIT SEPARATION
331	3	Standard Model	0-250	2@4/1@30	100	<1m?	1800	140(60)/-20(-29)	200	>25M?
331-SS	3	Stainless Steel Bearing	0-250	2@4/1@30	100	<1m?	1800	140(60)/-20(-29)	200	>25M?



Accessories

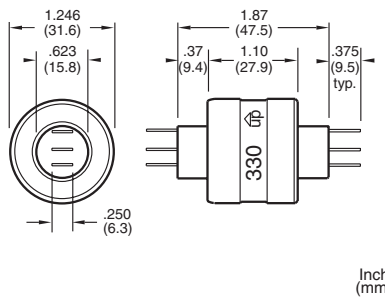


Terminals for other wire gauges available.

3 Conductors, 30 Amp

Model 330

MODEL NO.	CONDUCTORS	DESCRIPTION	VOLTAGE AC/DC	AMP RATING AT 240 VAC	MAX FREQ. MHz	CONTACT RESISTANCE	MAX OP. RPM	TEMPERATURE Max. F (C) / Min. F (C)	ROTATION Torque (gm-cm)	CIRCUIT SEPARATION
330	3	Standard Model	0-250	30	100	<1m?	1200	140(60)/-20(-29)	300	>25M?
330-SS	3	Stainless Steel Bearing	0-250	30	100	<1m?	1200	140(60)/-20(-29)	300	>25M?



Accessories

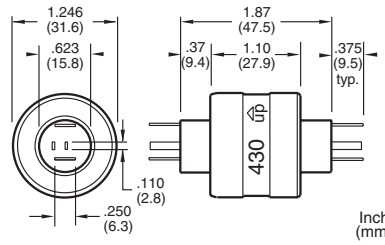


Terminals for other wire gauges available.

4 Conductors, Combination 4 Amp & 30 Amp

Model 430

MODEL NO.	CONDUCTORS	DESCRIPTION	VOLTAGE AC/DC	AMP RATING AT 240 VAC	MAX FREQ. MHz	CONTACT RESISTANCE	MAX OP. RPM	TEMPERATURE Max. F (C) / Min. F (C)	ROTATION Torque (gm-cm)	CIRCUIT SEPARATION
430	4	Standard Model	0-250	2@4/2@30	100	<1m?	1200	140(60)/-20(-29)	400	>25M?
430-SS	4	Stainless Steel Bearing	0-250	2@4/2@30	100	<1m?	1200	140(60)/-20(-29)	400	>25M?



Accessories

