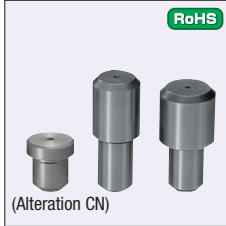


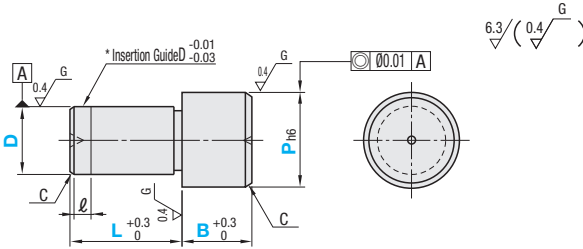
Locating Pins - Large Flat Head

Standard



Material No.	Material	Surface Treatment	Hardness	P Selectable		P Configurable		P, L, B Configurable	
				Type	D Tol.	Type	D Tol.	Type	D Tol.
①	01 Tool Steel Equivalent	-	Treated Hardness: 60~63HRC	JP	DA (m6)	JP	DC (m6)	FP	DC (m6)
②	01 Tool Steel Equivalent	Hard Chrome Plating Plating Thickness: 3µm or more	Hardness: 50~55HRC Plating Hardness: 750HV~	GJP		GJP		GFP	
③	01 Tool Steel Equivalent	-	-	BJP		BJP		BFP	
④	304 Stainless Steel	-	-	SJP	DPA (p6)	SJP	DPC (p6)	SFP	DPC (p6)
⑤	304 Stainless Steel	Hard Chrome Plating Plating Thickness: 3µm or more	Plating Hardness: 750HV~	HJP		HJP		HFP	
⑥	440C Stainless Steel	-	Treated Hardness: 50~55HRC	CJP		CJP		CFP	

Some combinations are not available. Refer to the price list to select the available combination.



P Tolerance Table

P	h6
1.50~3.00	0 -0.006
3.01~6.00	0 -0.008
6.01~10.00	0 -0.009
10.01~18.00	0 -0.011
18.01~30.00	0 -0.013

* The insertion guide is applicable to tolerance p6 only. ④440C Stainless Steel has an identification groove on D part.
Polished, centering hole is sometimes not available for 304 Stainless Steel.

P Selectable

Type	D Tol.	Part Number		P	L	B	ℓ	C		
		D	D Tolerance							
JP GJP BJP SJP HJP CJP	DA (m6)	1	+0.008	+0.012	2	3	2	0	0.1	
		2	+0.002	+0.006	3	4			0.5	
		3			5					
		4			6, 8	5	3			
		5	+0.012	+0.020	8	8	4	1	1	
		6	+0.004	+0.012	8, 10	10	5			
	DPA (p6)	8	+0.015	+0.024	12	12	6		1.5	
		10	+0.006	+0.015	12, 14	16	10			
		12			16	20	20	2	2	
		13	+0.018	+0.029	18	22	22			
		16	+0.007	+0.018	25	24	25			
		20	+0.021	+0.035	30	32	30		3	

P Configurable

Type	D Tol.	Part Number		P	L	B	ℓ	C	
		D	D Tolerance						
JP GJP BJP SJP HJP CJP	DC (m6)	1	+0.008	+0.012	1.50~2.50	3	2	0	0.1
		2	+0.002	+0.006	2.50~4.00	4			0.5
		3			3.50~6.00				
		4			4.50~7.00	5	3	1	1
		5	+0.012	+0.020	5.50~8.00	8	4		
		6	+0.004	+0.012	6.50~10.00	10	5		
	DPC (p6)	8	+0.015	+0.024	9.00~13.00	12	6		1.5
		10	+0.006	+0.015	11.00~15.00	16	10		
		12			13.00~16.00	20	20	2	2
		13	+0.018	+0.029	14.00~18.00	22	22		
		16	+0.007	+0.018	17.00~25.00	24	25		
		20	+0.021	+0.035	22.00~30.00	32	30		3

P, L, B Configurable

Type	D Tol.	Part Number		P	L	B	ℓ	C	
		D	D Tolerance						
FP GFP BFP SFP HFP CFP	DC (m6)	1	+0.008	+0.012	1.50~2.50	2, 3	2.0~5.0	0	0.1
		2	+0.002	+0.006	2.50~4.00	2~6	2.0~10.0		0.5
		3			3.50~6.00	3~6	2.0~10.0		
		4			4.50~7.00	4~8	2.0~10.0	1	1
		5	+0.012	+0.020	5.50~8.00	5~10	2.0~10.0		
		6	+0.004	+0.012	6.50~10.00	6~12	2.0~12.0		
	DPC (p6)	8	+0.015	+0.024	9.00~13.00	8~16	2.0~15.0		1.5
		10	+0.006	+0.015	11.00~15.00	10~20	3.0~20.0		
		12			13.00~16.00	12~24	3.0~20.0	2	2
		13	+0.018	+0.029	14.00~18.00	13~26	5.0~20.0		
		16	+0.007	+0.018	17.00~25.00	16~32	5.0~20.0		
		20	+0.021	+0.035	22.00~30.00	20~40	5.0~20.0		3



Ordering Example

Type	D Tol.	D	P	L	B
JP	DA	8	-	12	
SJP	DPC	10	-	14.01	
CFP	DC	12	-	P15.97	- L12 - B3.5



Days to Ship [Configure Online](#)



Price [Configure Online](#)

P Selectable

D	Unit Price					
	①01 Tool Steel Hardened JPDA JPDPA	②01 Tool Steel (Hardened) GJPDA GJPDPA	③01 Tool Steel BJPDA BJPDPA	④304 Stainless Steel SJPDA SJPDPA	⑤Hard 304 Stainless Steel HJPDA HJPDPA	⑥440C Stainless Steel CJPDA CJPDPA
1						
2						
3						
4						
5						
6						
8						
10						
12						
13						
16						
20						

P Configurable

D	Unit Price					
	①01 Tool Steel Hardened JPDC JPDPC	②01 Tool Steel (Hardened) GJPDC GJPDPC	③01 Tool Steel BJPDC BJPDPC	④304 Stainless Steel SJPDC SJPDPC	⑤Hard 304 Stainless Steel HJPDC HJPDPC	⑥440C Stainless Steel CJPDC CJPDPC
1						
2						
3						
4						
5						
6						
8						
10						
12						
13						
16						
20						

P, L, B Configurable

D	Unit Price					
	①01 Tool Steel Hardened FPDC FPDPC	②01 Tool Steel (Hardened) GFDC GFDPDC	③01 Tool Steel BFPDC BJPDPC	④304 Stainless Steel SFPDC SJPDPC	⑤Hard 304 Stainless Steel HFPDC HJPDPC	⑥440C Stainless Steel CFPDC CJPDPC
1						
2						
3						
4						
5						
6						
8						
10						
12						
13						
16						
20						



Alterations

Part Number	P	L	B	(MH, RC, CN)
JPDPC12	-	14.01	-	MH
BFPDC6	-	P8.00	-	L9 - B5.0 - CN

[Configure Online](#) Alterations are not available for P Selectable Type.

Alterations	Tapping	Spherical Tip	C Chamfered Size
Code	MH	RC	CN
Spec.	Adds a tapped hole. [Ordering Code] MH Applicable when D≥12.	Changes the relief to R0.5. [Ordering Code] RC Applicable when P-D≥2.	Changes C Chamfering at P dimension part to 0.5 or less. Not applicable to D dimension part. Applicable when D≥3.
Price Adder			

