

Contact Wire Splice, Screw-In

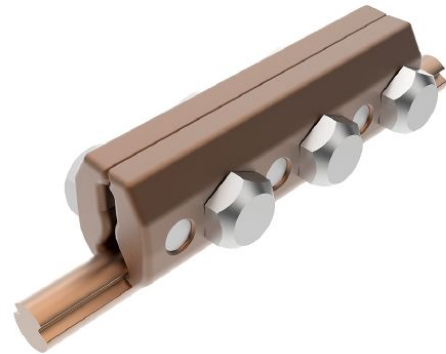
This clamp is used to connect grooved overhead traction wires with full tension.

Application:

- Electrical connection
- Traction wire splice

Material:

- Forged parts: CuNi2Si (UNE-EN 12165)
- Screws: Stainless steel (A2) (EN ISO 3506)



Picture may vary.

Technical Data

Article no.		302 537 537
References		ADIF: 64.311.150
Contact wire	(mm ²)	AC/BC 80/120
Contact wire	Ri / Ris / Rim	Ri80 - Ri120
Tightening torque M10	(Nm)	44
Weight	(kg)	0,5

Dimensions

