

DRG.No. C 41706	SWITCH V3FQ1
SHEET OF SHEETS	
DRAWN DATE	
P.V.	
TRACED SCALE	2:1

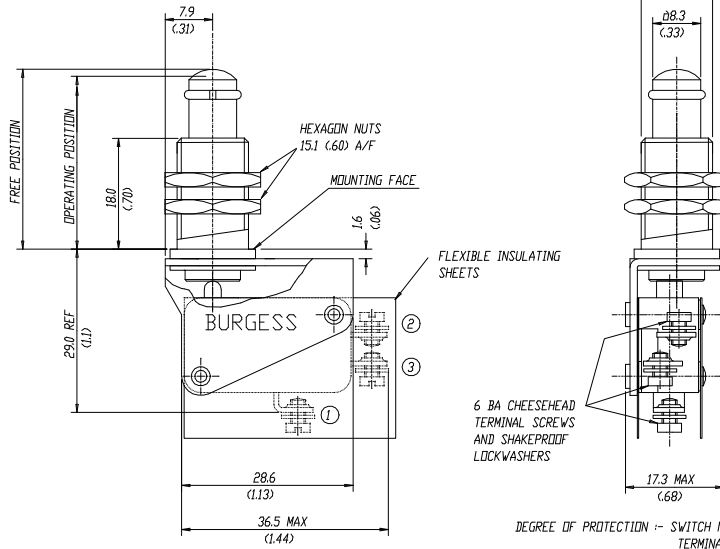
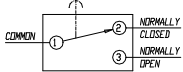
DO NOT SCALE **INSTALLATION DRAWING** THIRD ANGLE PROJECTION

© THIS DRAWING IS THE PROPERTY OF BURGESS MICRO SWITCH CO.LTD. AND MUST NOT BE USED OR COPIED, ENTIRELY OR IN PART, WITHOUT THE PERMISSION OF BURGESS MICRO SWITCH CO.LTD.

SPECIFICATION

ACTUATING FORCE :- 3.3N (12ozf) MAX.
 RELEASE FORCE :- 1.1N (4ozf) MIN.
 FREE POSITION :- 31.0 (1.22) MAX.
 OPERATING POSITION :- 28.6 (1.13)
 MOVEMENT DIFFERENTIAL :- 0.4 (0.16) MAX
 OVERTRAVEL (AVAILABLE) :- 4.6 (1.8)
 OPERATING TEMPERATURE - 240°C (464°F) MAX

DIAGRAM OF CONNECTIONS



THIS DRAWING MUST ONLY BE AMENDED ON CAD SYSTEM

ISSUE No.	
& DATE	
2	4/2/94

DEGREE OF PROTECTION :-
WEIGHT:-

SWITCH
V3FQ1

DRG.No.
C 41706
SHEET OF SHEETS